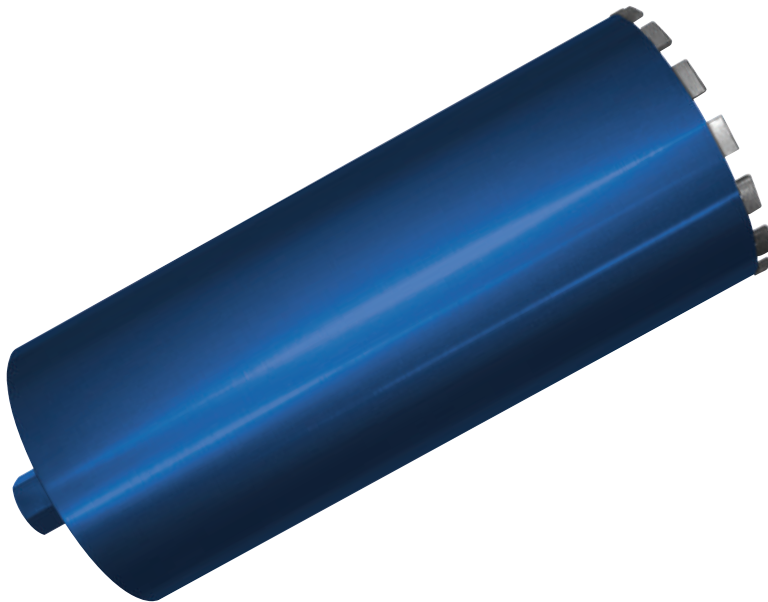


**WCXCEL WET CORE DRILLS - 1 1/4" UNC FEMALE FITMENT**

Mexco Professional Wet Core Drills have been developed to offer maximum effectiveness in the hardest of natural and manmade materials. These products have a laser welded segment to prevent segment loss and a rooftop segment for easier starting in harder materials.

**KEY FEATURES**

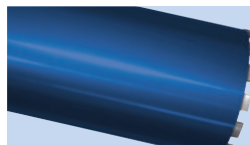
- Faster Starting Rooftop Segment
- Universal Reinforced Concrete Segment
- German Quality Barrels
- Cuts Flint, River Gravel and Limestone Aggregate Concrete



Faster Starting Rooftop Segment



1 1/4" UNC female fitment



German Quality Barrel

**PRODUCT OVERVIEW:**

**Grade:** XCEL

**Segment Type:** Rooftop

**Barrel Type:** Solid

**Dry/Wet:** Wet

**XCEL GRADE | OPTIMUM COST PER CUT**

The XCEL range of products are simply our best in class, due to an uncompromised use of raw materials in their manufacture they offer the user a cutting or drilling experience that is faster and cleaner with an optimum cost per cut.



**PRODUCT DATA SHEET**

**DIAMETERS AVAILABLE:**

| Code     | Diameter (mm) | Length (mm) | Fitment    |
|----------|---------------|-------------|------------|
| A11WC42  | 42            | 450         | 1 1/4" UNC |
| A11WC52  | 52            | 450         | 1 1/4" UNC |
| A11WC65  | 65            | 450         | 1 1/4" UNC |
| A11WC72  | 72            | 450         | 1 1/4" UNC |
| A11WC78  | 78            | 450         | 1 1/4" UNC |
| A11WC86  | 86            | 450         | 1 1/4" UNC |
| A11WC102 | 102           | 450         | 1 1/4" UNC |
| A11WC108 | 108           | 450         | 1 1/4" UNC |
| A11WC112 | 112           | 450         | 1 1/4" UNC |
| A11WC117 | 117           | 450         | 1 1/4" UNC |
| A11WC127 | 127           | 450         | 1 1/4" UNC |
| A11WC132 | 132           | 450         | 1 1/4" UNC |
| A11WC152 | 152           | 450         | 1 1/4" UNC |
| A11WC162 | 162           | 450         | 1 1/4" UNC |
| A11WC178 | 178           | 450         | 1 1/4" UNC |
| A11WC182 | 182           | 450         | 1 1/4" UNC |
| A11WC200 | 200           | 450         | 1 1/4" UNC |
| A11WC250 | 250           | 450         | 1 1/4" UNC |

**SUITABLE FOR USE ON:**

CORE DRILL MACHINES IN ACCORDANCE WITH MANUFACTURERS HANDBOOK



**APPLICATION:**

- Granite
- Class A Engineering Brick
- Clay Pipes And Pavours
- Hard Slate
- Hard Facing Brick
- River Gravel Aggregate Concrete
- Flint Aggregate Concrete
- Reinforced Concrete
- Concrete Kerbs
- Soft Facing Brick
- Concrete Blocks 3.5 - 15Kn
- Hard Sandstone
- Coarse Sandstone
- Soft Slate
- Breeze Block
- Lignacite Blocks
- Asphalt Over Concrete \*
- Asphalt \*



Brick



Soft Stone



Reinforced Concrete

● **RECOMMENDED** to cut these materials

● **Will cut these materials** with the possibility of reduced lifetime / glazing

\* Special segments required for this application  
Please contact us for details