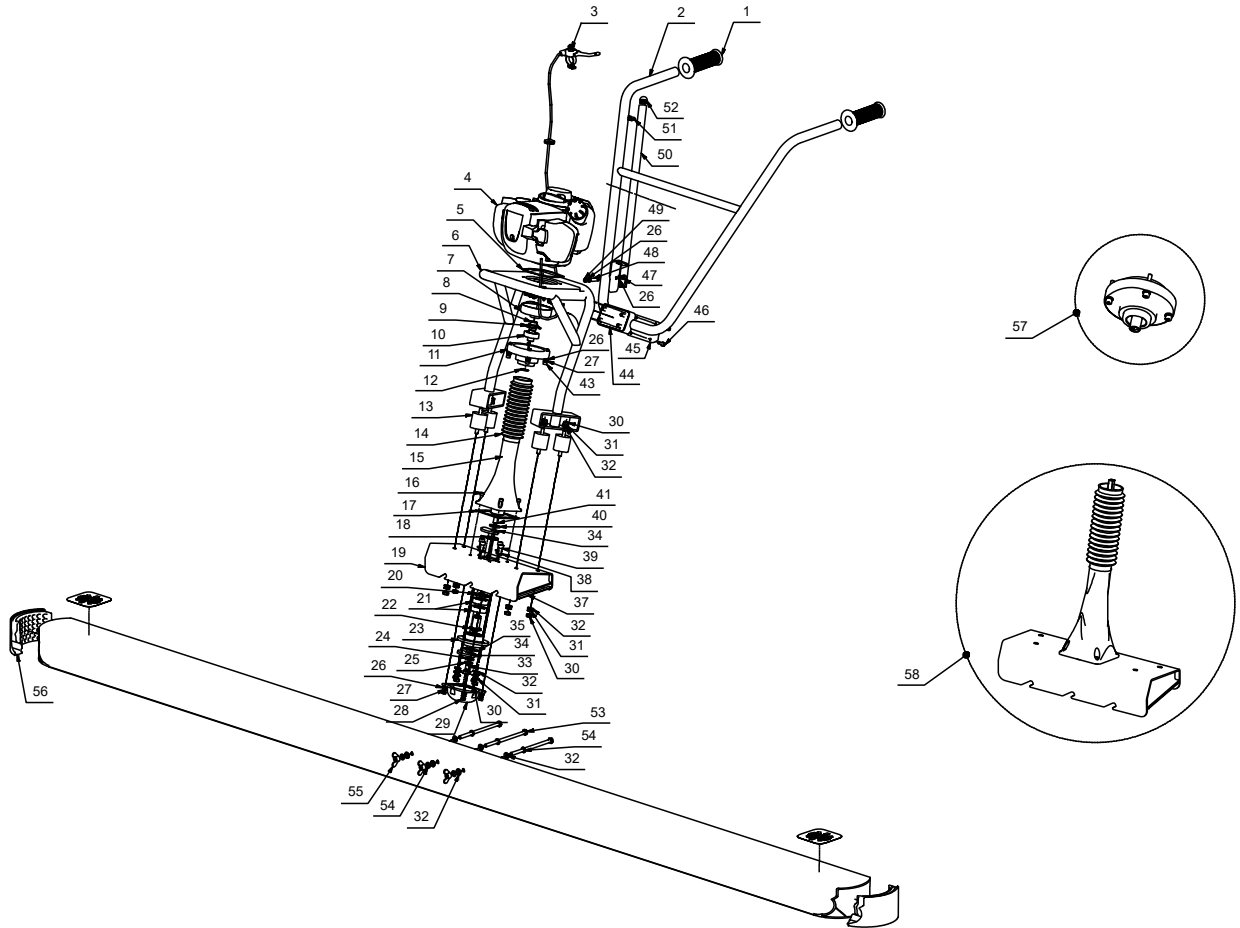




World Leader
in Concrete Vibrators

Review 2 . From serial number nr. 10044801

FLOATING SCREED HURACAN



	ARTICLE	DESCRIPTION	QUANTITY	PRICE
1	107316	MAGLURA GRIP 0410955	2.0000	Discontinued
2	48816	HANDLE	1.0000	63.50
3	48342	ACCELERATOR ASSEMBLY	1.0000	Discontinued
4	48851	ENGINE ASSEMBLY H	1.0000	427.36
5	48832	SEAL ENGINE	1.0000	2.21
6	48843	CHASSIS	1.0000	144.31
7	48821	CLUTCH BELL	1.0000	17.09
8	48822	BELL CONNECTION	1.0000	19.14
9	103274	INTERNAL CIRCLIP I 40 DIN 472	1.0000	0.57
10	101176	BEARING 6203 2V C4	1.0000	6.44
11	48848	SUPERIOR BRIDLE	1.0000	28.75
12	103223	EXTERNAL CIRCLIP E 16 DIN 471	1.0000	0.57
13	107397	BUSHING D=40 L=40 MM M8	4.0000	4.33
14	107396	FOLDING	1.0000	6.75
15	48817	INFERIOR BRIDLE	1.0000	7.87
16	102318	ALLEN BOLT M 6×25 DIN 912 8.8	4.0000	0.57
17	48833	SEAL BOX	1.0000	2.21
18	48813	SPACER	1.0000	5.50
19	48847	ECCENTRIC SUPPORT	1.0000	25.44
20	103278	INTERNAL CIRCLIP I 42 DIN 472	1.0000	0.57
21	101164	BEARING 6004 2V C4	2.0000	6.91
22	48810	ECCENTRIC AXLE	1.0000	10.27
23	48829	BEARING SUPPORT	1.0000	15.03
24	102124	FLAT WASHER 12 DIN 125	1.0000	0.57
25	102126	STAR WASHER 12,5 A DIN 6798	1.0000	0.57
26	102110	FLAT WASHER 6 DIN 125	10.0000	0.57
27	102112	STAR WASHER 6,4 A DIN 6798	8.0000	0.57
28	102206	HEXAGONAL NUT M 6 DIN 934 8,8	4.0000	0.57
29	48839	ECCENTRICS HOUSING	1.0000	2.21
30	102208	HEXAGONAL NUT M 8 DIN 934 8.8	16.0000	0.57
31	102118	STAR WASHER 8,4 A DIN 6798	16.0000	0.57
32	102116	FLAT WASHER 8 DIN 125	16.0000	0.57
33	102471	HEXAGONAL BOLT M12×16 DIN 933 8.8	1.0000	0.57

	ARTICLE	DESCRIPTION	QUANTITY	PRICE
34	48812	ECCENTRIC	2.0000	4.33
35	48825	CONTROL ECCENTRIC PLATE	1.0000	3.32
37	48826	RUBBER JOINT PROFILE	2.0000	2.21
38	107301	SPRING PLATE 16 A DIN 2093	4.0000	0.57
39	102332	ALLEN BOLT M 8×20 DIN 912 8.8	4.0000	0.57
40	48842	FLEXIBLE SHAFT WASHER 28/16,5/4	1.0000	0.57
41	48846	FLEXIBLE SHAFT SET	1.0000	60.37
42	107055	PROTECTION BOX GPN1000/893	4.0000	0.57
43	102320	ALLEN BOLT M 6×35 DIN 912 8.8	4.0000	0.57
44	48837	HANDLEBAR ELASTIC FLANGE	1.0000	21.64
45	48838	HANDLEBAR CLOSING FLANGE	1.0000	3.65
46	102316	ALLEN BOLT M 6×15 DIN 912 8.8	4.0000	0.57
47	102202	LOCK NUT M 6 DIN 986	1.0000	0.57
48	48834	GUIDE BUSH	1.0000	2.21
49	102725	BOLT CILINDRIC M 6×50 DIN 84	1.0000	0.57
50	48823	CROWBAR	1.0000	7.69
51	107399	ELASTIC BRIDLE Ø19	1.0000	Discontinued
52	107323	CAP MOSS Ø 20 REF. 460835	1.0000	0.57
53	102428	HEXAGONAL BOLT M8×150 DIN 931 8.8	3.0000	3.33
54	102158	GROWER WASHER 8 B DIN 127	6.0000	0.57
55	107516	PULLING HANDLE	3.0000	3.33
56	48827	ROUND WING CAP	2.0000	15.63
57	48856	SUPERIOR BRIDLE ASSEMBLY	1.0000	69.61
58	48855	ECCENTRIC ASSEMBLY+TRANSMISSION	1.0000	170.86
59	107228	SAFETY STICKER	1.0000	2.21